

VON MORISSE GALLERY

[ARTISTS](#) [VIEWING](#)

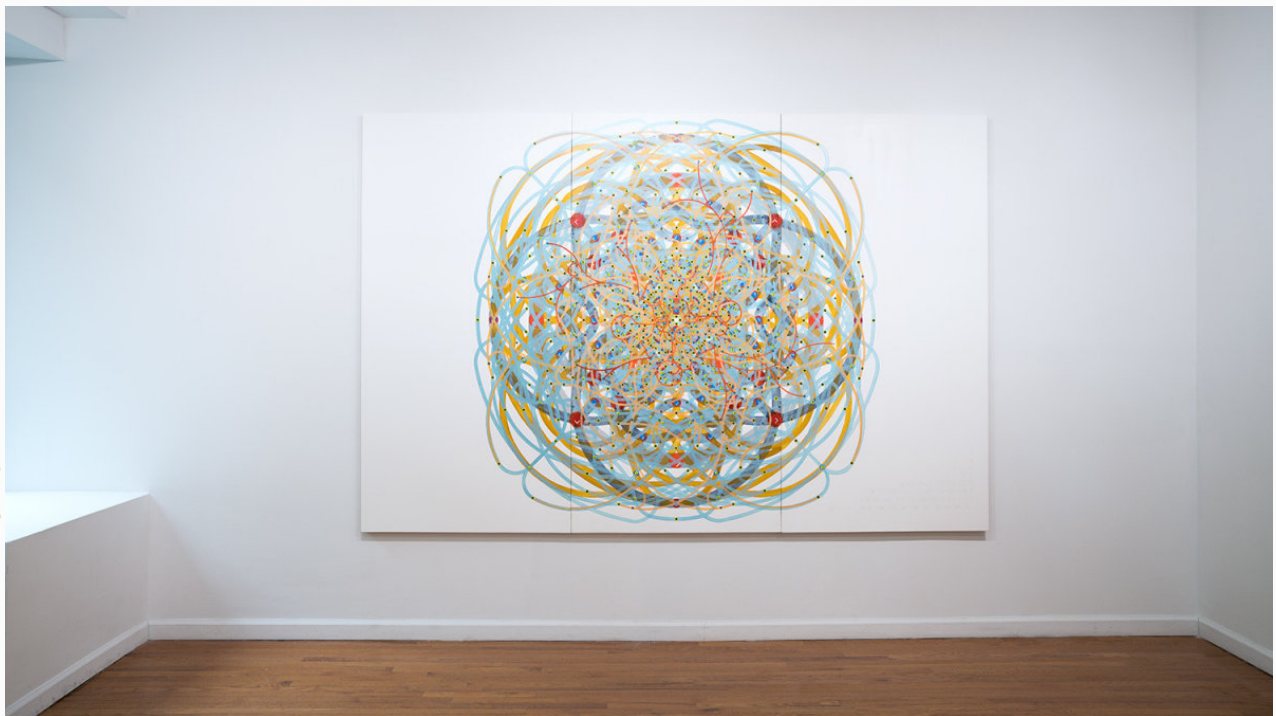
[ROOM](#) [EXHIBITIONS](#) [ARTFAIRS](#) [NEWS](#) [ABOUT](#) [ADVISORY](#) [CONTACT](#)

OWEN SCHUH UNFOLDING A CUBE presented by Silas von Morisse @ 7 East 14th St - ChaShaMa (Space to Present)

October 27 - November 17, 2018

[BACK](#)

[SELECTED WORKS](#) [THUMBNAILS](#)



OWEN SCHUH
Unfolding a Cube, 2018 Oct
oil and graphite on wood panel
70.87h x 106.30w x 2d in
180h x 270w x 5.08d cm
OS125

OWEN SCHUH UNFOLDING A CUBE presented by

Silas von Morisse @ 7 East 14th St - ChaShaMa (Space to Present)

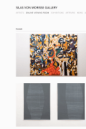
October 27 - November 17, 2018

October 2018, Silas von Morisse is pleased to present **Owen Schuh** second solo exhibition with the gallery. The exhibition will be held at ChaShaMa (Space to Present) in Manhattan, 7 East 14th St. See open hours below.

Owen Schuh draws his inspiration from mathematical rules, algorithms and complex organic systems. In particular, he is fascinated by simple sets of well-defined rules that generate unexpectedly intricate and nuanced structures. His work is painstakingly created by hand using pencils, paint, a compass and, at most, the aid of a pocket calculator.

Owen Schuh, Unfolding A Cube is a visual investigation of different methods and orders for unfolding a simple form, the cube: 3 dimensions, 6 facets, 8 vertices and 12 edges become one surface of varying configurations. These eleven 'nets' of a cube are typically represented in Tetris-like diagrams in geometry. However, Schuh's paintings and drawings use these 'nets' as a starting point to visually explore the interrelatedness and extra-linguistic meaning of all possible futures, together. Dürer's conjecture describes that a convex three-dimensional figure, cut along its edges and unfolded, can be flattened without overlapping upon itself. A simple thing gets simpler, no plot-twists. Fascinatingly, seven cuts from form to flat manifest unexpectedly elaborate shared and divergent fates, and illuminating them gets exponentially more complicated, especially once you start distinguishing between right and left hand, and coloring the faces of the cube, etc. Much as Sol Lewitt's Incomplete Open Cubes demonstrates, the iterative exploration of these 'unfoldings' can lead us to even further considerations, where we are able to creatively

Press



ARTSY For Galleries, Online Viewing Rooms Are About Storytelling and Sales Scott Indrisek Dec 27, 2019

[Download PDF](#)

[View More](#)



CHASHAMA (Space to Present) @ 7 East 14th St OWEN SCHUH UNFOLDING A CUBE

[View More](#)



WALL STREET INTERNATIONAL OWEN SCHUH

[View More](#)

study and marvel at not only the elegant numerations, but also the relationships between each of the possibilities. All futures witnessed simultaneously, time compressed and experience expanded.

Unending complexity birthed from simple methods and straightforward actions. Schuh's work seeks to illuminate the entwining relations between embodied mind, mathematics, and the physical world. His artwork is structured by mathematical functions and iterations, which though relatively simple in nature yield outcomes of surprising organic complexity. In each piece Schuh strives to manifest phenomena unique to the interaction between the physical medium and the logical structure.

OWEN SCHUH UNFOLDING A CUBE

Oct 27 - Nov 17, 2018

Opening Reception Saturday Oct 27, 5 - 8 PM

ChaShaMa (Space to Present)

7 East 14th Street

New York City, NY 10003

Open hours

Wednesday: 11am - 6pm

Thursday: 11am - 6pm

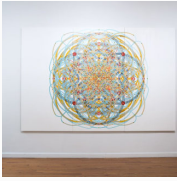
Friday: 11am - 6pm

Saturday: 11am - 6pm

PLEASE CONTACT THE GALLERY FOR FURTHER
INFORMATION ABOUT THE PAINTINGS

PRESS RELEASE

[Download PDF](#)



Owen Schuh

News



OWEN SCHUH

in

UNCERTAINTY

Alyce De Roulet

Williamson

Gallery, Art

Center College

of Design,

Pasadena CA

October 11-

January 22,

2017

[View More](#)

Appointment only T +1 646 331 3162

info@silasvonmorisse.com T +1 646 331 2368

Artspace

